

860 BURLEY DRIVE, WEST VANCOUVER

TOTALS
 Main Floor (finished): 1,490 sq.ft.
 Main Floor (unfinished): 170 sq.ft.
TOTAL: 1,660 sq.ft.

OTHER AREAS:
 Storage: 274 sq.ft.



TOM HASSAN

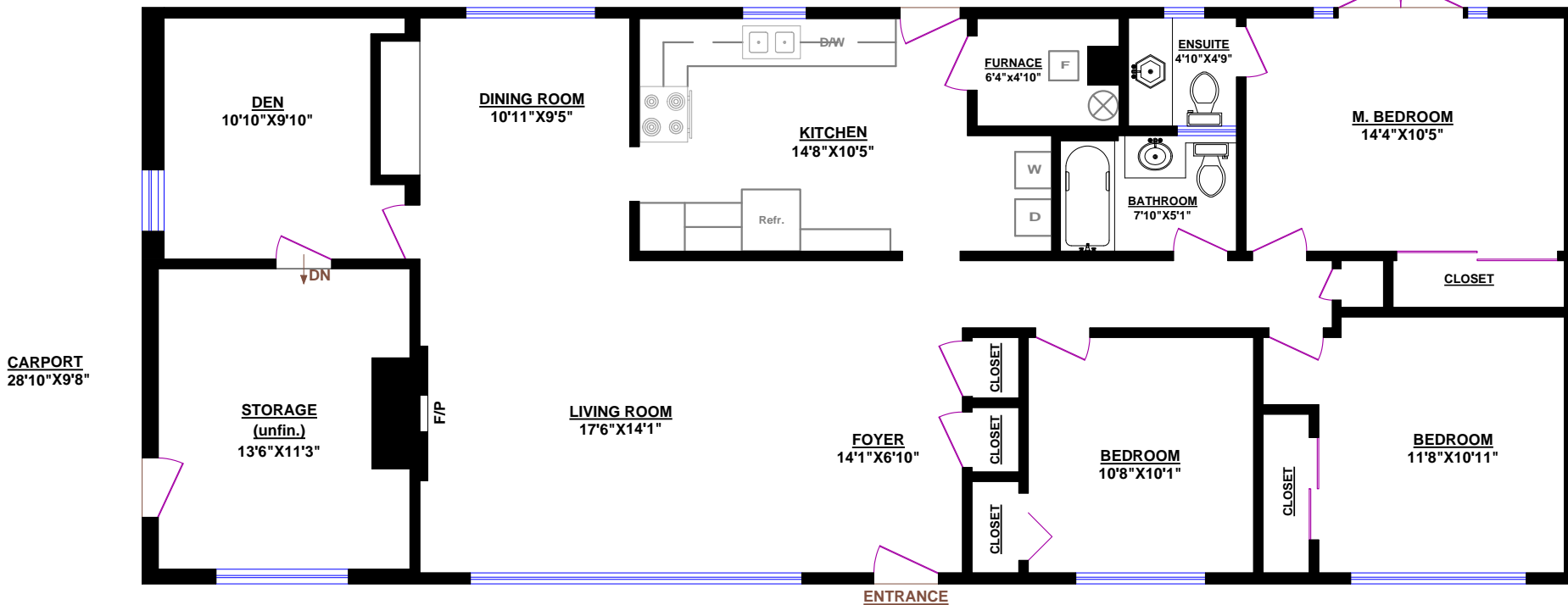
604.809.9777 cell
 tom@tomhassan.com
 www.tomhassan.com



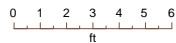
2397 Marine Drive,
 West Vancouver V7V1K9



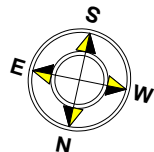
PATIO
 29'10"X18'1"



CARPORT
 28'10"X9'8"



© Vancouver Realty Support Group Inc., (604) 761-7919
 www.floorplansvancouver.com



MAIN FLOOR