



TOM HASSAN

604.809.9777 cell
 tom@tomhassan.com
 www.tomhassan.com

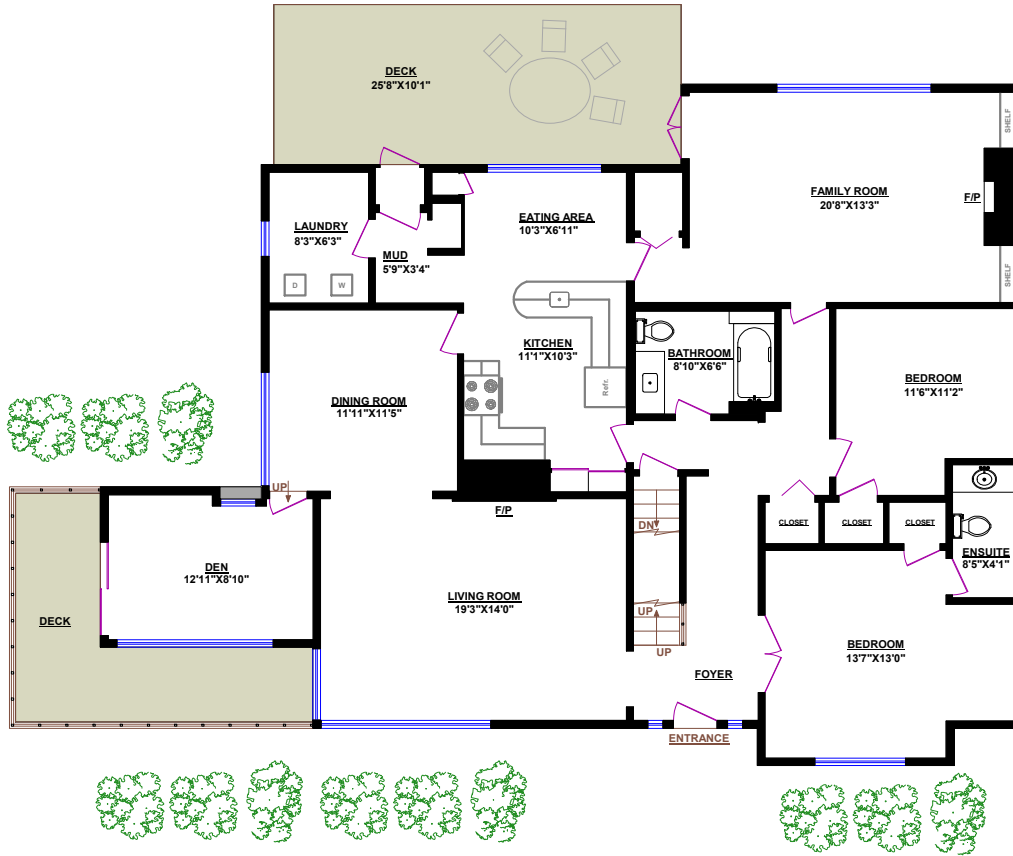


2397 Marine Drive,
 West Vancouver V7V1K9

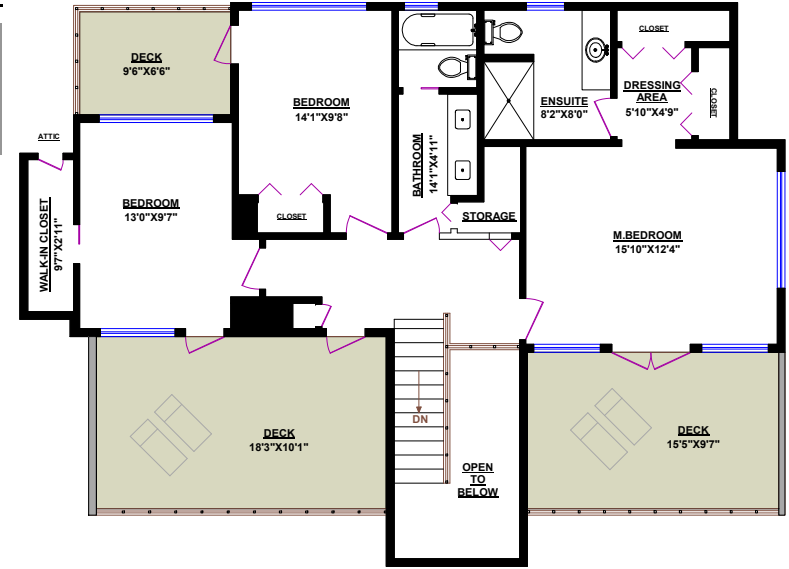
961 YOUNETTE DRIVE, WEST VANCOUVER

TOTALS	
Main Floor (finished):	1,933 sq.ft.
Upper Level (finished):	941 sq.ft.
Lower Level (finished):	0 sq.ft.
TOTAL FINISHED:	2,874 sq.ft.
Lower Level (unfinished):	1,361 sq.ft.
GRAND TOTAL:	4,235 sq.ft.

Garage/Storage:	288 sq.ft.
Deck (Main):	259 sq.ft.
Deck (Main):	156 sq.ft.
Deck (Upper):	198 sq.ft.
Deck (Upper):	148 sq.ft.
Deck (Upper):	62 sq.ft.



MAIN FLOOR



UPPER LEVEL



LOWER LEVEL

0 1 2 3 4 5 6

0 0.5 1.0 1.5 2.0
m

